



**UNITED NATIONS CHILDREN'S FUND**  
**JPO Request Form**



**Training and Learning Plan**

- ✓ Participation in a one-week JPO Induction Programme in New York.
- ✓ Guidance and advice in relation to training opportunities within the field of expertise.
- ✓ Use of yearly JPO training funds for internal/external training opportunities.
- ✓ Participation in the Mentoring, Coaching, and Career Counselling and Career transition programmes.
- ✓ Encourage field mission and/or stretch assignment during and after the 2<sup>nd</sup> year.

In addition, the JPO will benefit from the following specific learning opportunities in the receiving office:  
Will be engaged with the Maternal Newborn Child and Adolescent Health (MNCAH) and Health System Strengthening team inside Health section and learn about all MNCAH function in a large and complex country office with both development and emergencies programming. JPO will also get exposure on the Mental Health in emergency context as Bangladesh is vulnerable to natural disasters every year besides a protracted emergency of Rohingya response, one of the biggest refugee camps in the world.  
Opportunity to work with experienced mental health professionals in the region and provide support to colleagues working in Emergencies.

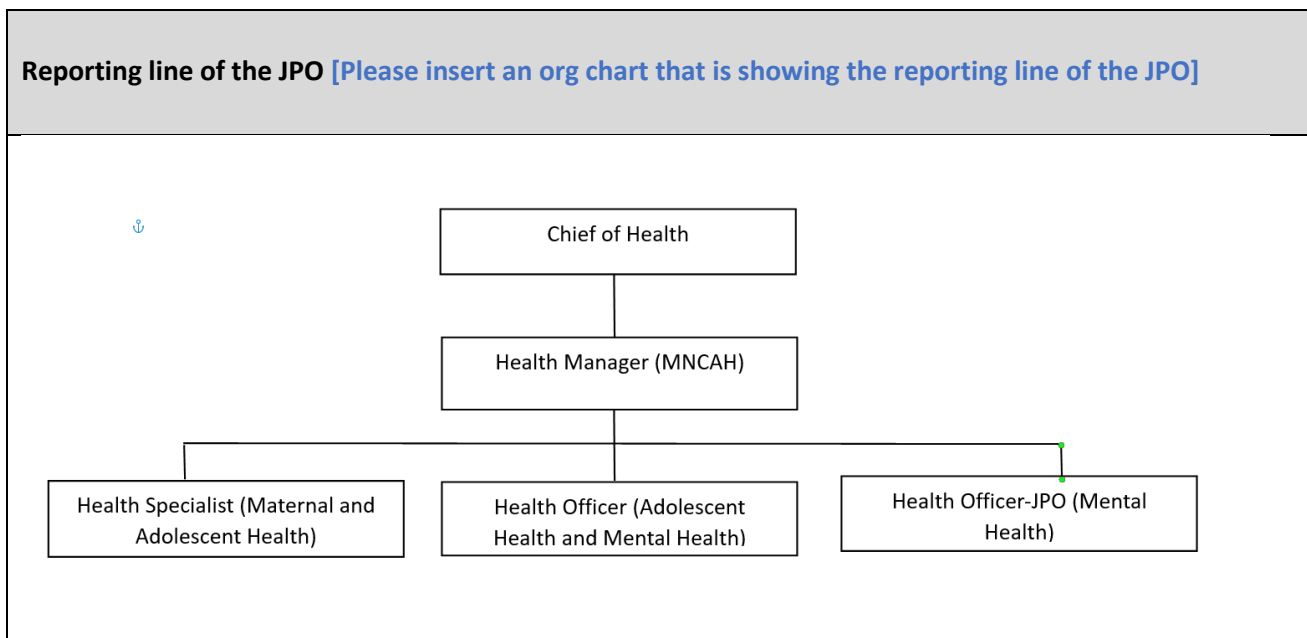
**Supervisor's experience in coaching and development of young professionals:**

The supervisor of this position will be Health Manager (MNCAH) with more than 24 years of work experience in Maternal Newborn Child and Adolescent Health, Mental Health programme, and Health System

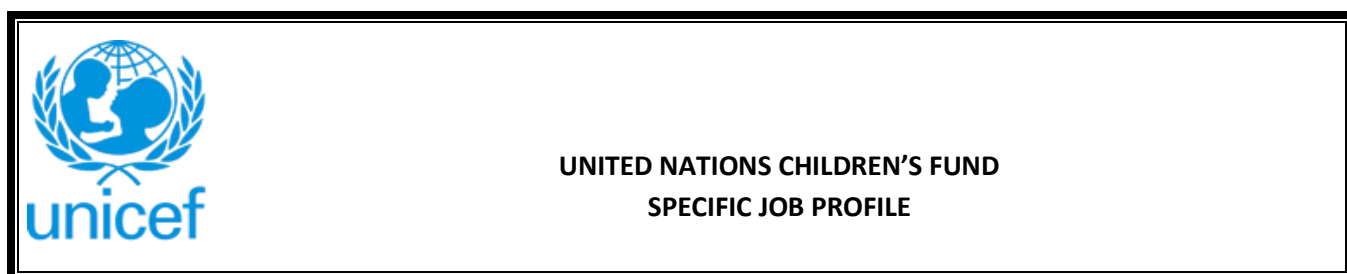
Strengthening etc. with the significant experience of coaching and mentoring young professionals.

Information and living condition of Duty station: [For Filed Office locations only]	
General Information	<p>Bangladesh, officially the People's Republic of Bangladesh, is a country in South Asia. It is the eighth-most-populous and among the most densely populated countries, with a population of around 170 million in an area of 148,460 square kilometres. Bangladesh shares land borders with India to the west, north, and east, and Myanmar to the southeast; to the south it has a coastline along the Bay of Bengal. Dhaka, the capital and largest city, is the nation's political, financial and cultural centre. Chittagong, the second-largest city, is the busiest port on the Bay of Bengal. The official language is Bengali. UNCEF House in Dhaka is one of the biggest offices in South Asia region and other UN agencies in Bangladesh.</p> <p>Dhaka is one of the largest and most densely populated city in the world, with a population of over 18 million. The city has developed infrastructure, accommodation and required services and facilities. The country also has significant international presence of UN, NGOs and Diplomatic Missions.</p>
Security	<p>The Security Level in Bangladesh is classified as Phase 1 (Precautionary) of the UN Security Plan. This means that international staff must always be conscious about the fact that security threats that may affect individuals and their dependents living in the duty station exist all the time and precautions should be exercised. UNDSS rules are applied at workplace, residence and during travel in the field. Traffic congestion on the roads and sporadic political unrest and minor vandalisms often create security challenges.</p>
Housing	<p>Different types of short and long-term accommodation are available in Dhaka standalone houses, houses in gated compounds, apartments. These could be furnished and/or fully serviced, or unfurnished. Advertisements of rental opportunities are available with admin section, and they can also support in finding suitable accommodation. Commute to office will take approximately one-hour drive to the office. There are local means of transportations including bus, auto-tempo, rickshaw etc. The currency in Bangladesh is the Taka (Tk), which is currently equal 119 Taka to the US\$ Dollar. ATM booths are available for cash withdrawal in different locations of the city. Medical facilities are adequate near to office locations and residential locations. Majority of international and diplomatic missions are located in recommended areas (Gulshan 1, 2 and Baridhara).</p>
Schools & Childcare	<p>Different options of internationally accredited schools exist, taught either in English or French. International schools often include a kindergarten and pre-school classes (sometimes even a nursery) for younger children. It is advisable to ask your embassy in Dhaka which schools your compatriots prefer for their kids.</p>

Work for spouses & partners	Work opportunities for spouses/partners are limited. However, if hired by any organization a work permit must be applied for through the same hiring organization and Ministry of Foreign Affairs of the Government. UNICEF office also have support services for this.
-----------------------------	---



\*\*\*You may use the GJP or use the Specific JD for the below sections\*\*\*



I. Post Information	
Job Title: Health Officer- Mental Health Supervisor Title/ Level: Health Manager (MNCAH) Organizational Unit: Health Section, UNICEF Post Location: Dhaka, Bangladesh	Job Level: P2 Job Profile No.: Job Classification Level:
II. Strategic Office Context and purpose for the job	

### Strategic office context:

The promotion of mental health is a fundamental human right that is important at all stages of life, including childhood, adolescence, and adulthood. It encompasses psychosocial disabilities and other mental states that cause distress and impairment in functioning. Individual, social, and structural factors can affect mental health, including psychological and biological factors, as well as exposure to adverse social, economic, geopolitical, and environmental circumstances.<sup>1</sup>

Globally, around 970 million people, or 1 in every eight, live with a mental disorder, contributing to about 8 million (14.3%) annual deaths. In Bangladesh, a 2021 survey by the National Institute of Mental Health found that 17.3% of children aged 7 to 17 have mental disorders, but many do not seek treatment, resulting in a 94.3% treatment gap for child mental disorders. Children and adolescents aged 0-19 make up 38.6% of Bangladesh's population and are crucial for the nation's development. Bangladesh has enacted the National Mental Health Act 2018, National Mental Health Policy 2022, and National Mental Health Strategy 2020-2030 to provide mental health services and support. Additionally, with UNICEF's support, the Ministry of Health and Family Welfare has developed the National Strategy for Adolescent Health (NSAH) 2017-2030, with mental health as a strategic focus. Mental health issues, especially among young people, are not adequately addressed in Bangladesh, with only 0.5% of total government health expenditure allocated to mental health. The consequences of failing to address child and adolescent mental health conditions extend into adulthood, impacting both physical and mental health. Additionally, recent civil unrest has highlighted the need for mental health and psychosocial support.

UNICEF Bangladesh is undertaking a focused initiative to support the mental health and psychosocial wellbeing of children and adolescents including the conflict affected population among 0-19 years age group. UNICEF Bangladesh is looking for a specialist in the area of mental health and psychosocial support to support mental health programme of the children and adolescents in Bangladesh.

### Office Overview

The 2022–2026 UNICEF country programme is aimed at supporting Bangladesh to take maximum advantage of the remaining period of its demographic window of opportunity by making prioritized investments in children for the realization of child rights and sustainable development in Bangladesh.

Health component is aimed at ensuring that all children, adolescents and women have equitable access to and use quality, high-impact health services and adopt appropriate healthy life practices. The focus is towards Universal Health Coverage through support for policies, strategies, investment cases, fiscal space analyses and delivery models for primary health care. Innovative technology will support the strengthening of the health management information system for an integrated data warehouse for improved decision-making. Support primary health care and all service delivery platforms for the delivery of an essential-service package supported by a social accountability system, community engagement and demand generation. Emergency preparedness

---

<sup>1</sup> Kirkbride JB, Anglin DM, Colman I, Dykxhoorn J, Jones PB, Patalay P, Pitman A, Sonesson E, Steare T, Wright T, Griffiths SL. The social determinants of mental health and disorder: evidence, prevention and recommendations. World Psychiatry. 2024 Feb;23

and response will be strengthened, and awareness will be raised on environmental health issues, including climate change. In this country programme, UNICEF is supporting MOH&FW to ensure mental health and psychosocial wellbeing of children and adolescents through equitable access to comprehensive, integrated, and responsive mental services through continuum of care approach starting from promotion and prevention, focused care, early detection, screening, basic management through PHC facilities and a linkage with higher centre for the advanced case management. UNICEF will also support in formulating CAMH status report including service mapping, CAMH guideline, implementation strategy etc. UNICEF Bangladesh has established partnership with the CSOs, development partners including UN organizations, academia like the department of Clinical Psychology, Dhaka University and Department of Psychiatry, Bangabandhu Sheikh Mujib Medical University, Bangladesh Association of Child and Adolescent Mental Health (BACAMH) under the Child and Adolescent Mental Health South Asian Network (CAMHSAN). The aim of this mental health programme is to establish a sustainable, right based, holistic, inclusive community based mental health model towards universal mental health coverage through integrating in ESP for delivery through PHC.

#### Purpose for the job:

The JPO will provide technical, operational and administrative assistance to the Mental Health Programme within UNICEF's Country Programme in Bangladesh.

The JPO will play an important role from programme planning to delivery of results, by preparing, executing, and managing, a variety of technical and administrative tasks to facilitate programme development, implementation, programme progress monitoring, evaluating and reporting of results.

1. Support to programme development and planning on Mental Health and Psychosocial Support (MHPSS) for the children and adolescents in Bangladesh.
2. Programme implementation and management, monitoring and delivery of results, data management and preparation of reports on MHPSS.
3. Technical and operational support to planning and management of health supplies and partners.
4. Networking and partnership building with relevant stakeholders, government, and health sector and with other cross-sectoral departments and ministries.
5. Innovation, knowledge management and capacity building, of stakeholders.
6. collaboration with other relevant sections (Child Protection, Education, SBC, and others)

Under direct supervision of Health Manager (MNCAH), the JPO will be responsible for the following key functions/accountabilities:

- Strengthen advocacy around child and adolescent mental health and psychosocial wellbeing.
- Strengthen service delivery systems for the provision of accessible, integrated, child and adolescent-centric, and family-responsive care services for mental health and psychosocial wellbeing and development across community-based health settings through integrating into Essential Service Package (ESP).

- Implement strategies for promoting mental well-being and preventing mental ill-health across different sectors, such as, health, education, child protection, social welfare and in community settings.
- Develop and implement information systems, conduct research and facilitate innovation on child and adolescent mental health and psychosocial wellbeing and integrate in the system.
- Design of specialized services for recovery from mental illness and psychotherapy for healing especially for vulnerable adolescents e.g. survivor of violence and integrate in the system.

### **III. Key functions, accountabilities and related duties/tasks:**

#### **1. Support to programme development and planning on Mental Health and Psychosocial Support (MHPSS) for the children and adolescents in Bangladesh.**

- Identify the potential stakeholders in relevant ministries, departments and development partners including UN, professional organizations, CSOs who work with child and adolescent mental health and engage in mapping exercise on Child and Adolescent Mental Health (CAMH) programmes.
- Support the formation of Scientific Advisory Committee and the Technical Working Group for Mental Health and Psychosocial Support (MHPSS), Child and Adolescent Mental Health (CAMH) and Helping Adolescents Thrive (HAT), and other relevant entities.
- Develop multisectoral strategy for child and adolescent mental health, CAMH guideline for the service providers and frontliners at different tier.
- Support programme planning, results-based planning and monitoring and evaluation of results by providing technical and operational support at all stages of programming processes. This includes executing and administering various technical programme transactions, preparing materials and documentations, and ensuring compliance with organizational processes and management systems.

#### **2. Programme management, monitoring and delivery of results, data management and preparation of reports on MHPSS.**

- Support MOH&FW to collaborate with relevant ministries and develop and implement as per the child and adolescent mental health continuum of care approach starting from promotion and prevention, focused care approach, early detection, screening, basic management through PHC facilities and a linkage with higher centre for the advanced case management. Support agencies for implementation research on 'Integration of mental health in essential service package for delivery through primary health care center'. Establish a mechanism for monitoring and evaluation including designing of RBM tools and reporting formats for HMIS, FPMIS etc. and engage in monitoring and evaluation, programme review, annual sectoral reviews etc.
- Collaborate with colleagues and partners to address operational and implementation issues, provide solutions, recommendations, and/or to escalate higher-level intervention and decisions to appropriate officials and stakeholders.
- Coordinate the donor reporting for the health section and liaise with other sections for timely submission and maintain records of reports and assessments for reference and institutionalize lessons learned.

3. Technical and operational support to programme implementation, support to program planning and management of health supplies and partners

- Conduct regular programme field visits and surveys and share information with partners and stakeholders to assess progress, provide technical support and/or refer to relevant officials for resolution. Report on critical issues, bottlenecks, and potential problems for timely action to achieve results.
- Provide technical and operational support to government counterparts, NGO partners, UN system partners, and other country office partners/donors on the application and comprehension of UNICEF policies, strategies, processes, and best practices on health-related issues to support programme implementation, operations, and delivery of results.
- Provide regular monitoring and management of health supplies, working with partners to ensure that timely utilization of resources and prepositioning for emergencies.

Provide support to program implementation through management of partners and ensuring timely processes are maintained for HACT, liquidations and reporting.4. Networking and partnership building with health stakeholders, government and health sector

- Build and sustain effective close working partnerships with health sector, government counterparts and national stakeholders through active sharing of information and knowledge to enhance programme implementation and build capacity of stakeholders to deliver concrete and sustainable results.
- Draft communication and information materials for programme advocacy to promote awareness, establish partnerships/alliances, and support fund raising for health programmes. Provide donor support visits.
- Participate in appropriate inter-agency partners/colleagues on health programmes/projects, and to integrate and harmonize UNICEF's position and strategies.5. Innovation, knowledge management and capacity building, of stakeholders. Support communication and SBC sections to develop digital contents for advocacy, campaign, social media posts, U report etc. Policy action to strengthen systems for universal delivery of promotion/ prevention interventions and programmes
- Support organization of national level roundtable, study, research, policy dialogues etc.
- Develop PSA, HIS, Audio-Visual materials on CAMH.

#### IV. Impact of Results

Mental health is an emerging public health issue, especially for children and adolescents, yet it is often neglected and rarely addressed. Failing to address mental health in child and adolescent can have long-term consequences, impairing both physical and mental health and limiting their opportunities for a fulfilling life as adults. In Bangladesh, this issue has not received sufficient visibility, policy attention and funding. This position will contribute to strengthening the health system with other ministries across various sectors, particularly in the area of Child & Adolescent Mental Health and Psychosocial Support through an accessible, child and adolescent centric health service delivery systems by integrating mental health into the Essential

Service Package (ESP). Additionally, it will involve connecting with comprehensive mental health and wellbeing promotion and preventive interventions in different sectors including education, protection and community platforms.

## V. Competencies and level of proficiency required

### Core Values attributes

- Care
- Respect
- Integrity
- Trust
- Accountability
- Sustainability

### Core competencies skills

- Nurtures, Leads and Manages People (1)
- Demonstrates Self Awareness and Ethical Awareness (2)
- Works Collaboratively with others (2)
- Builds and Maintains Partnerships (2)
- Innovates and Embraces Change (2)
- Thinks and Acts Strategically (2)
- Drives to achieve impactful results (2)
- Manages ambiguity and complexity (2)

### Functional Competencies (please use GJP as reference):

- Persuading and influencing (1)
- Applying technical expertise (1)
- Learning and researching (2)
- Planning and organizing (2)

## VI. Recruitment Qualifications

Education:	A university degree in one of the following fields is required: Clinical Psychology, Psychiatry, Clinical Social Work
Experience:	A minimum of two years of professional experience in one or more of the following areas is required: Mental Health, Child and Adolescent Mental Health, Mental Health in emergencies and humanitarian context.

	Relevant experience in a UN system agency or organization is considered as an asset.
Language Requirements:	Fluency in English is required. Knowledge of another official UN language or local language of the duty station is considered as an asset.